

Index

Decorative profiles

Pro-living

Pro-part Caliza

Pro-telo Coal

Pro-part Copper

Pro-part Copper Line

Shower area

XPS Modular Niches

Square Black Grate

RAF Exterior

Thicker 90 x 90

Grid Raised Surface

PORCELANOSA Offsite

Modular facade

Monobath

DECORATIVE PROFILES



LIVING COLLECTION

The decoration of wall tiles with profiles remains a trend. In this regard, Butech has developed, in collaboration with PORCELANOSA, the exclusive Living collection that enhances PORCELANOSA's 3D Deco collections. Available in Gold and Black finishes, these profiles integrate perfectly with the ceramics and furniture in Living spaces, both to create volumes and to highlight the unique design of these tile collections.

RECOMMENDED APPLICATIONS

Decoration of indoor wall tiles in areas with no water presence

Do not use on floors, outdoor installations or in areas with water presence.

MAIN FEATURES

- AISI 304L stainless steel
- Profile thickness: 0.6mm
- PVD coating decoration
- Two models: Gold and Black with glossy finishing
- The profile is supplied with a protective film.

DECORATIVE PROFILES



PRO-LIVING WALL

is a 50 mm wide profile with fastening flange available in two finishes, Gold and Black gloss. Designed to be combined with ceramic tiles as a decorative line.

100357650	Gold	50mm	12.5mm	2700mm
100357647	Gold	50mm	7mm	2700mm
100357652	Black	50mm	12.5mm	2700mm
100357651	Black	50mm	7mm	2700mm

PRO-LIVING CORNER

is a 50 mm wide profile with continuous fastening flange available in two finishes, Gold and Black gloss. Designed to protect and decorate ceramic tile corners.

100357476	Gold	12.5mm	2700mm
100357477	Black	12.5mm	2700mm
100357653	Gold	7mm	2700mm
100357654	Black	7mm	2700mm



PRO-PART CALIZA

Decorative profiles can now also be used with the same finish as important collections such as Bottega, Coral, or Treccia from PORCELANOSA. Pro-part Caliza is a complement, along with the new neutral silicone s-107 n Caliza, that make easier the tile installation and provides visual unity on both floors and walls.

MAIN FEATURES

- Brass profile with decorative application.
- 8 mm side edge with a 90° angle finish
- Exclusive and resistant pigmentation
- Rough texture

RECOMMENDED APPLICATIONS

- Decorative line for wall tiles and floors.
- Separation of ceramic tiles with different designs or sizes.
- Right angle trim for wall corners.
- Indoor floors for residential use.



100367299	8mm	9mm	2500mm
100366191	8mm	11mm	2500mm
100367379	8mm	12.5mm	2500mm



PRO-TELO COAL

Industrialized systems applied to floor installation require technical solutions that simplify the installation of ceramics, such as the new Pro-telo Coal profile. Developed for floating floors with large-format tiles, it covers installation joints and preserves the quality of the ceramic flooring.

MAIN FEATURES

Aluminium profile with decorative application.

Exclusive and resistant black pigmentation

Rough texture

RECOMMENDED APPLICATIONS

Floating floors with ceramic tiles.

Floor tiles fixed to the substrate

Do not use on movement joints.



100365272 5mm 8mm 2700mm



PRO-PART COPPER

Rose gold or copper remains a trend in bathroom design: faucets, towel rails, and sinks, but also lamps and mirrors incorporate this metallic finish. Butech introduces its new Pro-part Copper and Pro-part Copper Line profiles, which, with their characteristic shiny copper tone, bring elegance, modernity, and visual unity to bathroom space design.

MAIN FEATURES

- Brass profile with decorative application.
- 8 mm side edge with a 90° angle finish
- Exclusive and resistant pigmentation
- Smooth or brushed surface finish

RECOMMENDED APPLICATIONS

- Decorative line for wall tiles and floors.
- Separation of ceramic tiles with different designs or sizes.
- Right angle trim for wall corners.
- Do not use on floors.

DECORATIVE PROFILES

PRO-PART COPPER

is a decorative wall profile with a smooth finish in a light coppery colour, perfect for creating warm atmospheres that complement bathroom decor in the same finish.

100367427	8mm	9mm	2500mm
100367490	8mm	11mm	2500mm
100367428	8mm	12.5mm	2500mm

PRO-PART COPPER LINE

differs from the previous one by its brushed finish, which makes it easier to integrate with mosaics and wall tiles featuring linear designs or reliefs. Ideal for tiles with tone variations.

100367491	8mm	9mm	2500mm
100367468	8mm	11mm	2500mm
100367469	8mm	12.5mm	2500mm





**SHOWER
AREA**



XPS MODULAR NICHES

Prefabricated modules for the creation of niches in bathrooms and wet areas for shampoo or shower gel. Made from concept panels with a waterproof XPS foam core and perimeter-sealed with a waterproof sheet, they are easy to install quickly and precisely, without the need for “in situ” construction. With Butech’s XPS modular niches, shelves and all kinds of spaces can be created in shower cabins and bathrooms, protected against water infiltration and ready to be finished with mosaic or tiles. Suitable for both public and private use.

MAIN FEATURES

- Made of extruded polystyrene panels coated on both sides with waterproof cement mortar.
- 10 cm wide waterproof perimeter ensures the sealing of joints between niche and wall.
- Excellent surface for fixing tiles, compatible with cement-based adhesives.
- Easy and quick installation.

RECOMMENDED APPLICATIONS

- Interior wall decoration covered with ceramic tiles or natural stone mosaics in direct contact with water.
- Bathrooms and shower cabins.
- Spas and wet areas in general.
- Suitable for installation on brick and concrete block walls as well as drywalls of plasterboard.

SHOWER AREA



100362819	40cm	20cm
100362784	40cm	30cm
100362796	40cm	40cm
100362798	40cm	50mm
100367184	< 90cm	< 300cm



SQUARE BLACK GRATE

The open bathroom with a built-in shower tray is a growing trend in interior design, where the use of waterproofing systems and grates is essential. The Square Black Grate, with its finish and compact size, is perfect for bathrooms that embrace the contrast between black and white as the predominant style. This type of grille, measuring only 10 x 10 cm, also allows for mosaic and tile fixing, making it easier to design shower trays with barely visible drainage.

**MAIN
FEATURES**

**RECOMMENDED
APPLICATIONS**

AISI 304L stainless steel
Drainage capacity: 0.50 l/s

Shower trays waterproofed
with Kit Imperband Eco.
Public and private use.



100366051 10cm 10cm

**RAF
EXTERIOR**



THICKER 90CM x 90CM



Bottega Caliza
100368869 90cm 90cm



Bottega Acero
100368873 90cm 90cm

**COPING
TILES**

These step tiles stand out for their straight design on the front and their uniform, modern appearance, where the front's tone matches that of the tread surface.

**MAIN
FEATURES**

L-shaped solid tile 20 mm thick

Bespoke from the standard floor tile

**RECOMMENDED
APPLICATIONS**

Outdoor Raised Floors, stairs, and pool edges

Public and private use.

SHOWER AREA

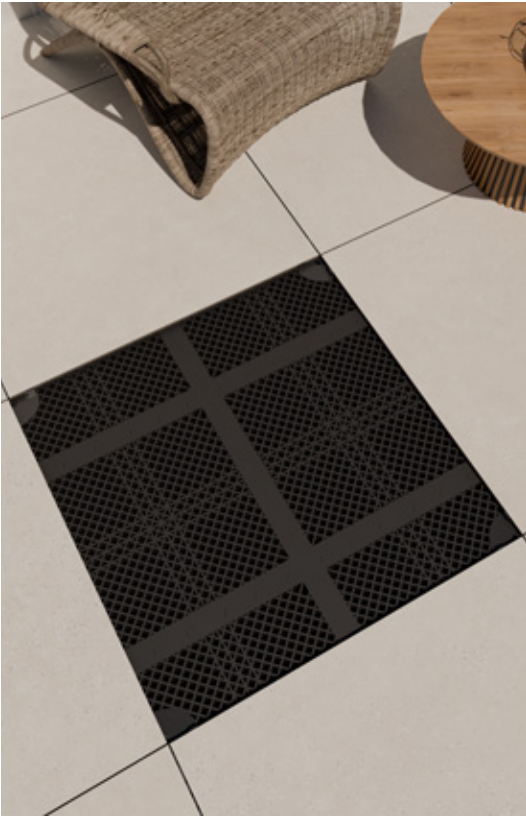


GRID RAISED SURFACE

The design of exterior raised flooring is now much simpler with the new concept Grid Raised Surface. Instead of placing support pedestals under each tile – a particularly challenging task with large formats or wood-inspired ceramic tiles – this system involves first constructing a uniformly distributed raised platform. The ceramic tiles are then installed freely on top. This system also makes it easier to replace tiles and combine different ceramic formats.

MAIN FEATURES	RECOMMENDED APPLICATIONS
AISI 304L stainless steel	Shower trays waterproofed with Kit Imperband Eco.
Drainage capacity: 0.50 l/s	Public and private use.

SHOWER AREA



GRID
serves as the core element of the GRS system, measuring 50 cm x 50 cm x 4 cm in height, the grids connect seamlessly via dovetail joints located along their edges. This design eliminates the need for any additional accessories to link the grids, resulting in a smooth and unified surface.

GRS SPACER:
is designed for use when installing floor covering such as ceramic tiles or cement slabs that need regular joints. Positioned at the intersections of the floor tiles, it ensures proper spacing and alignment. The spacer's removable tabs are 4 mm thick with a height of 12 mm.

PLOT N
height-adjustable pedestal available in heights ranging from 30 mm to 670 mm for exterior raised flooring. With a load capacity of 2,800 kg per pedestal, it provides an excellent support base for both the GRS system grids and the traditional exterior raised flooring systems.

PORCELANOSA
Offsite

WHAT IS IT?

30

MONOBATH

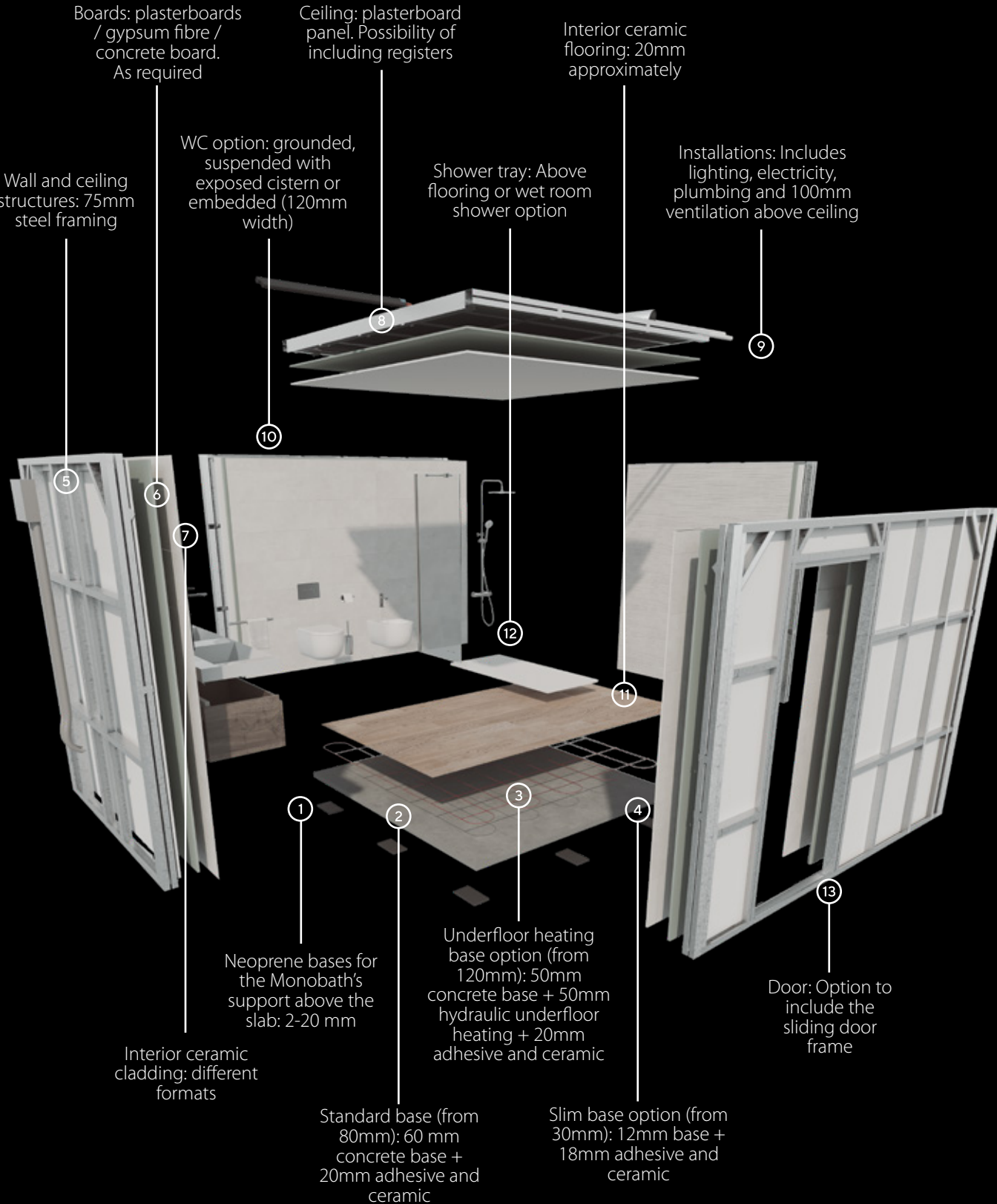
Butech building technology has more than 20 years of experience developing products and systems to support the use of ceramics in building industry. Now we present Monobath, PORCELANOSA's commitment to the industrialization of bathrooms production.

Monobath is the solution for the production of completely finished baths ready to be installed on site, which brings together the quality of finishes and expertise that characterizes PORCELANOSA Group. We have a modern automated assembly line which further improves the quality of our bathrooms. Monobath is the perfect system for all types of projects such as hotels, hospitals, residential buildings or care homes although it can also be adapted to single-family projects where the highest quality standards are demanded.



PORCELANOSA OFFSITE - MONOBATH

HOW IS IT?



PORCELANOSA OFFSITE - MONOBATH

METHODOLOGY

34



Production

Porcelanosa Offsite's robotic assembly line allows for complete industrialization in the manufacturing of Monobaths, ensuring high standards of quality and precision. This advanced technology positions our industrialized bathrooms as leaders in the market. Thanks to the exclusive use of materials from the Porcelanosa Group, we manage pre-stockpiling, thus avoiding stock shortages.

Our production adapts to the specific bathroom needs in each construction project, guaranteeing a responsive and efficient response.

Finally, all our bathrooms undergo rigorous final quality tests, ensuring a superior and reliable product

Transportation

Monobaths are designed to adapt to various modes of transportation, including by road, in maritime containers, ship holds, and Ro-Ro, adjusting to their specific dimensions. To ensure their integrity during transportation, the bathrooms are perfectly packaged, heat-sealed, and strapped, ensuring their protection and preservation.

Furthermore, they are equipped with sensors that detect possible impacts during the journey, allowing for constant monitoring and ensuring their arrival in optimal conditions



Assembly

The construction company conducts a preliminary survey, essential for the proper installation of Monobaths. Porcelanosa Offsite takes responsibility for leveling and placing the Monobaths, using specialized personnel from the company to ensure precise and efficient installation.

We provide the necessary tools for proper lifting, including slings and mobile platforms, as well as tools for on-site movement, such as manual and electric pallet jacks, ensuring safe and proper handling. Additionally, we adapt to the delivery pace desired by the client on the construction site, offering flexibility and coordination with project timelines

WHAT IS IT?

36

MODFACADES

Modfacades is a facade module system that is supplied fully finished from the factory with insulation, structure, and Porcelanosa Grupo finishing. Being a product manufactured in the workshop, it offers numerous advantages over traditional facades. It is a system that ensures high construction quality, creating a standard solution with high technical performance tailored to the project's needs, allowing for precise control of the manufacturing and installation process.

FULLY FINISHED FACADES:

- _ Self-supporting systems
- _ Thermal insulation
- _ Waterproofing
- _ Sound insulation
- _ Exterior finish
- _ Carpentry and glass
- _ Sealing from the inside

It features an EPDM joint system that facilitates expansion and alignment, preventing water ingress.

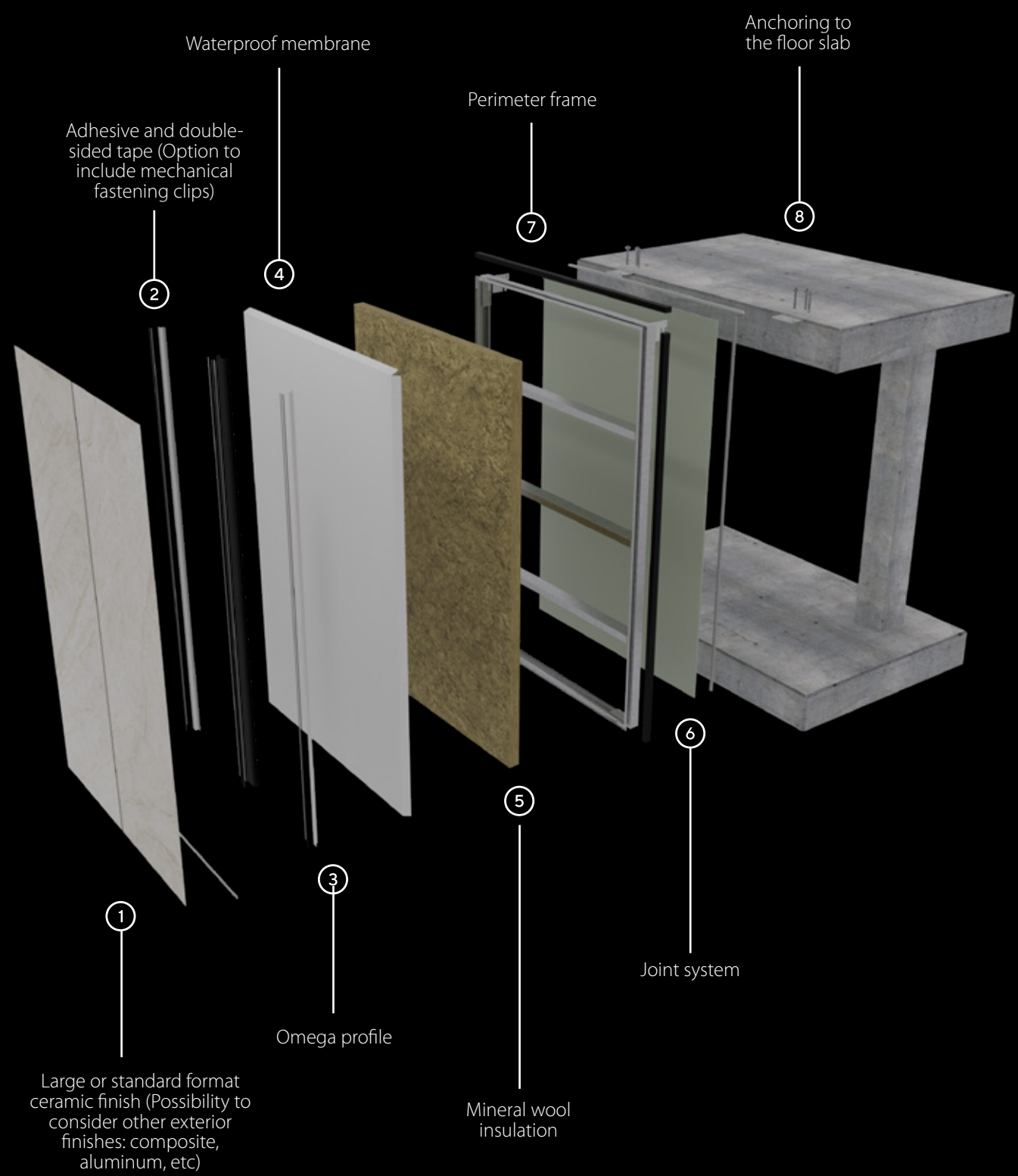
The modules are anchored to the upper floor using anchoring plates that allow for adjustments in all three Cartesian axes to correct structural deviations. Furthermore, the modules are secured to each other on the sides and bottom using tie plates. There is also the option to include windows, glass, and their finishes



PORCELANOSA OFFSITE - MODFACADES

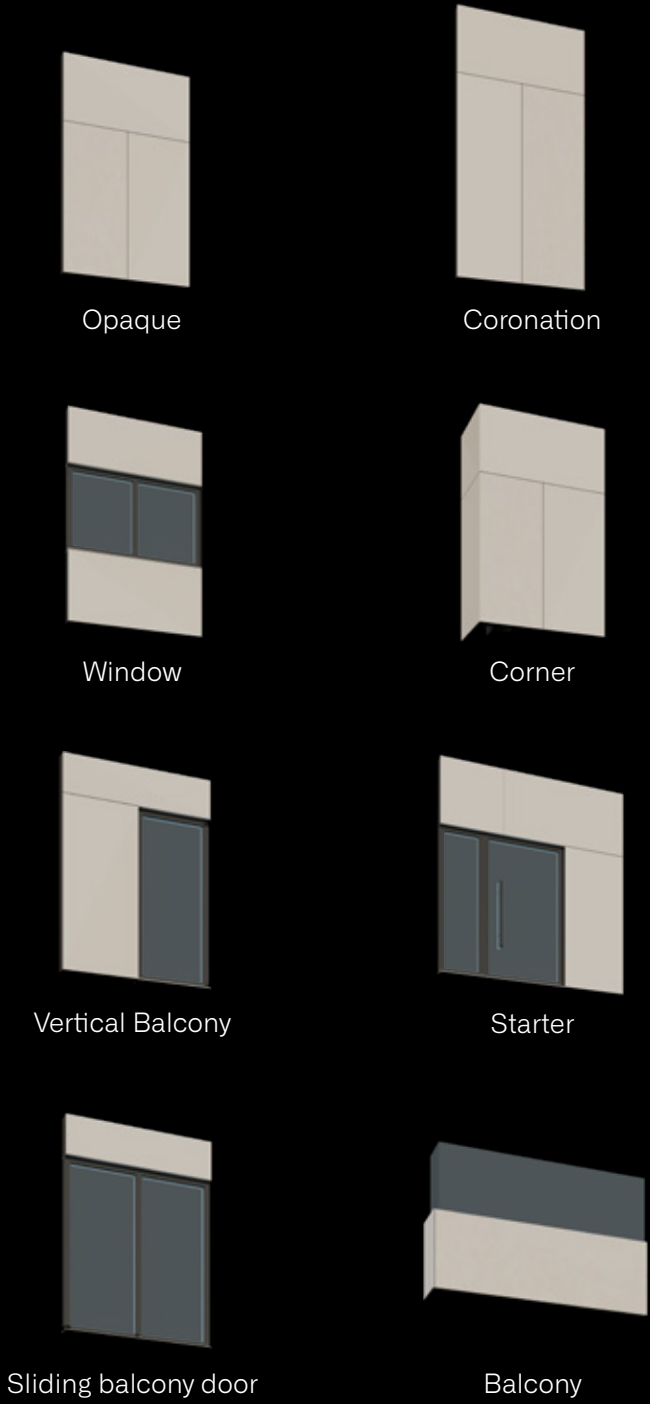
HOW IS IT?

38



TYPES OF MODULES

40



Our technical department will collaborate with the project drafting team to help define the necessary module types based on the project's constraints. Below are some common types:

ACHIEVEMENTS

Hotel & Spa
Castillo de Peñíscola
Peñíscola, Spain



CEIP Jaume I
Nules, Spain



Berkshire House
Maidenhead, United Kingdom



Watford Football Stadium
Hertfordshire, United Kingdom

Hotel calle Cuba
Valencia, Spain

Hospital Clínico
Valencia, Spain

butech

BUTECH Building Technology S.A.U.

Reserves the right to modify and/or discontinue certain models displayed in this catalogue. The colours and finishes of tiles shown in the catalogue may differ slightly from the originals. The settings shown in this catalogue are design proposals for advertising purposes. In real situations in which the tiles are laid, the installation instructions published by PORCELANOSA should be followed. It is agreed that weights, dimensions, capacities, prices, performances, colours and other data contained in catalogues, prospects, circulars, illustrations, price-lists or other illustrative seller's documents, shall all constitute an approximate guide only.

International Exhibition of Ceramic Tile and
Bathroom Furnishings 2025. Edition 1

© 2025 BUTECH Building Technology, S.A.U.

Diseño gráfico: Marketing - butech

Ctra. Villarreal - Puebla de Arenoso
(CV-20) Km 2,5. Vila-real (Spain)
+34 964 53 62 00 - butech@butech.es

www.butech.es



