



fitwall®  
MINERAL DECORATIVE PANELS

KRION  
PORCELANOSA Grupo





**fitwall<sup>®</sup>**  
MINERAL DECORATIVE PANELS

**KRICN**  
PORCELANOSA Grupo

# index

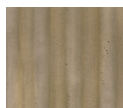
## CONCRETE SERIES

---

### WAVE · 14



White Sand



Ocre Sand



Grey Sand

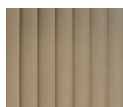


Raw White

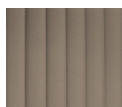
### ARCO · 20



White Sand



Ocre Sand

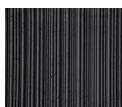


Grey Sand

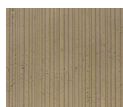


Raw White

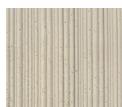
### ROLLING · 26



Velvet Black



Ocre Sand



White Sand



River Sand



Raw White

## COTTO SERIES

---

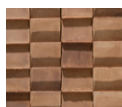
### MATTONELLA · 32



Paglierino



Rosato



Anticato



Bruciato



White Clay



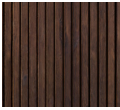
Raw White



WOOD SERIES

---

DOGHE · 38



Nogal  
Americano



Roble  
Murano

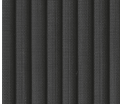


Roble  
Natura

CREATIVE SERIES

---

WILLOW · 44



Velvet Black



Velvet Green



Velvet Blue



Raw White

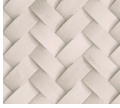
PALM · 50



Caribbean



Mediterranean

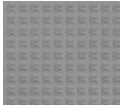


Raw White

SHADES · 56



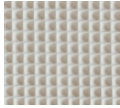
White Sand



Dark Sand



Vanilla Sand



Raw White

OZ · 62



Red Clay



Yellow Clay



White Clay



Mediterranean



Velvet Brown



Raw White

Fitwall® panels are decorative coverings which can recreate textures and volumes with great realism to the eye and to the touch. Designed for covering vertical facings of walls, units and commercial and residential fittings, they can also be installed on ceilings and horizontal coverings such as non-functional decorative elements.

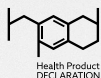
The composition of the panels has been developed exclusively by Krion Porcelanosa Group. This material contains a large quantity of minerals, bonded with resin which incorporates recycled PET. Thanks to this composition, Fitwall® offers good safety performance in fire resistance, impermeability and low emission of volatile organic compounds.







Fitwall® panels are produced from a unique mixture of different materials. The balance between these elements is decisive for achieving the maximum performance in their use.



In their composition, Fitwall® panels incorporate a mineral load of over 50% with a high technical value, which contribute distinctive properties with regard to:

- Reduced use of resin in manufacturing.
- Improved flame retardant properties of the panel.
- Resistance and flexibility throughout the panel.






MINIMUM 3% RECYCLED  
CONTENT POST INDUSTRIAL  
AND/OR POST-CONSUMER

SCS Global Service, a leading North American independent entity in environmental certifications, has verified that Fitwall® panels contain a minimum of 3% PET in their composition, largely from recycled plastic waste, thereby demonstrating commitment to more sustainable and environmentally friendly production.


9

Finally, the inorganic pigments, acidic enamel and water-based dyes give Fitwall® panels a great natural appearance.


Fitwall® panels have a careful aesthetic based on original creations and also present a series of attractive properties that provide them with the functionality to stop being just a decorative panel, such as impact resistance, fire resistance, reparability and non-porousness. In addition, it contributes as an acoustic insulator and protector.




Mineral composition




100% realistic finishes




Light weight




Flexibility




Impact resistance




Fire resistance




Dry construction



Resistance to dry heat



Repairable



Reusable







At Krion Porcelanosa Grupo, our mission is to create design products that meet the quality requirements of today's market, that are technologically advanced and that are also linked to values associated with sustainability. We understand sustainability as a rational system by which we minimize the use of resources, opting to use recycled materials and low energy consumption, offering the market durable and repairable products. We want to be a part of the chain that promotes the circular economy, basing our purpose on the research and development of new solutions.

11



For the manufacture of the Fitwall® panels, Krion Porcelanosa Grupo S.A.U. has committed to rational sustainability through EPUPR technology, and is a pioneer in the use of a resin with an exclusive formulation.

This incorporates recycled polyethylene terephthalate (PET), contributing to minimising the consumption of the planet's natural resources.

Fitwall® panels are designed to cover walls, ceilings and furniture, creating different and attractive spaces in an easy way.



Homes



Retail



Hotel



Restaurants,  
bars and cafés



Offices



Public  
buildings



Health  
service



Transport

12



Walls



Ceilings



Units



Equipment



Fitwall® panels come in different finishes and colors, but if you do not find the one that suits your space, Fitwall® has the Raw White finish that is ready to be painted the color you want.



13



For the installation of Fitwall® panels, accessory materials such as fillers, paints or dyes are used. If you have any doubts, please consult the specific data sheet of each model.



# wave

Subtle and delicate forms create Wave, a panel of contrasts combining smooth curves with the texture of details. Wave creates sophisticated and timeless spaces, seeking care for detail in each element.

Design created by Estudi{H}ac.







**Wave · White Sand**  
100287549



**Wave · Ocre Sand**  
100293371



**Wave · Grey Sand**  
100293337



**Wave · Raw White**  
100305790

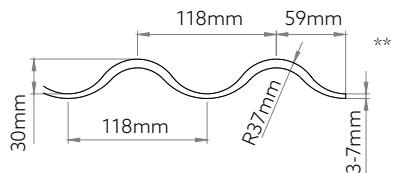
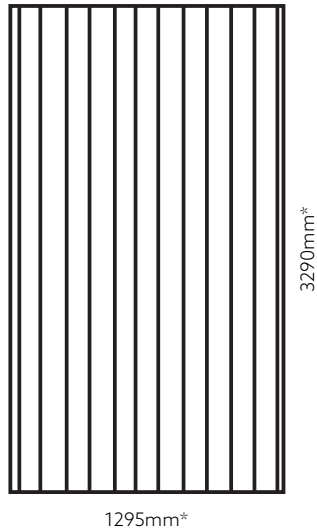


# SpA hotel

17



## Group B



(\*) Approximate measurements. Nominal measurement tolerances are  $\pm 20\text{mm}$  on the long side and  $\pm 10\text{mm}$  on the short side. (\*\*) Approximate measurements. Design height tolerance  $\pm 5\text{mm}$ .



# arco

The grandeur of the monuments of Roman architecture have served as an inspiration for designing Arco. The Arco model is ideal for creating atmospheres with subtle, delicate decoration, which make an impact on everyone.

Design created by Estudi{H}ac.

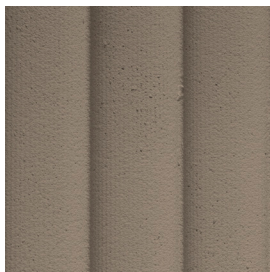




Arco · White Sand  
100293356



Arco · Ocre Sand  
100293299



Arco · Grey Sand  
100293381



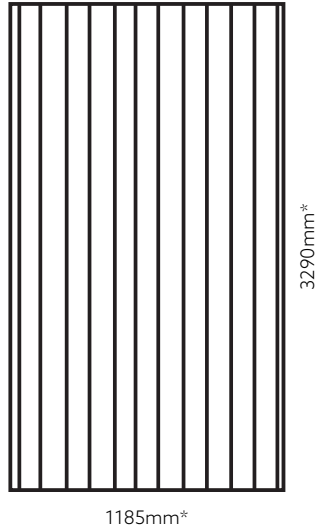
Arco · Raw White  
100305763



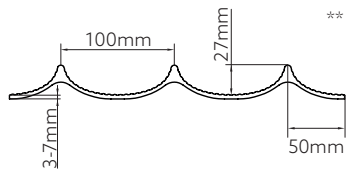




## Group B



25



(\*) Approximate measurements. Nominal measurement tolerances are  $\pm 20\text{mm}$  on the long side and  $\pm 10\text{mm}$  on the short side. (\*\*) Approximate measurements. Design height tolerance  $\pm 5\text{mm}$ .



# rolling

Inspired by the beauty given to us by nature, we have designed Rolling, a panel which stands out due to its exotic and natural aesthetic. Ideal for use in spaces which seek to convey peace, with a natural, timeless decoration.

Design created by Estudi{H}ac.



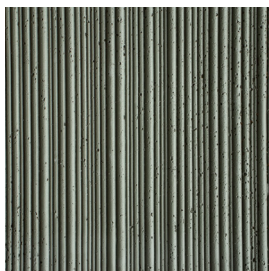




Rolling · White Sand  
100293357



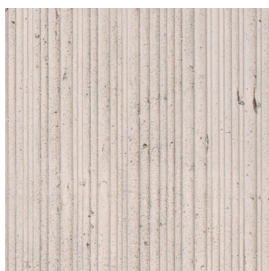
Rolling · Ocre Sand  
100293333



Rolling · River Sand  
100293279



Rolling · Velvet Black  
100293370

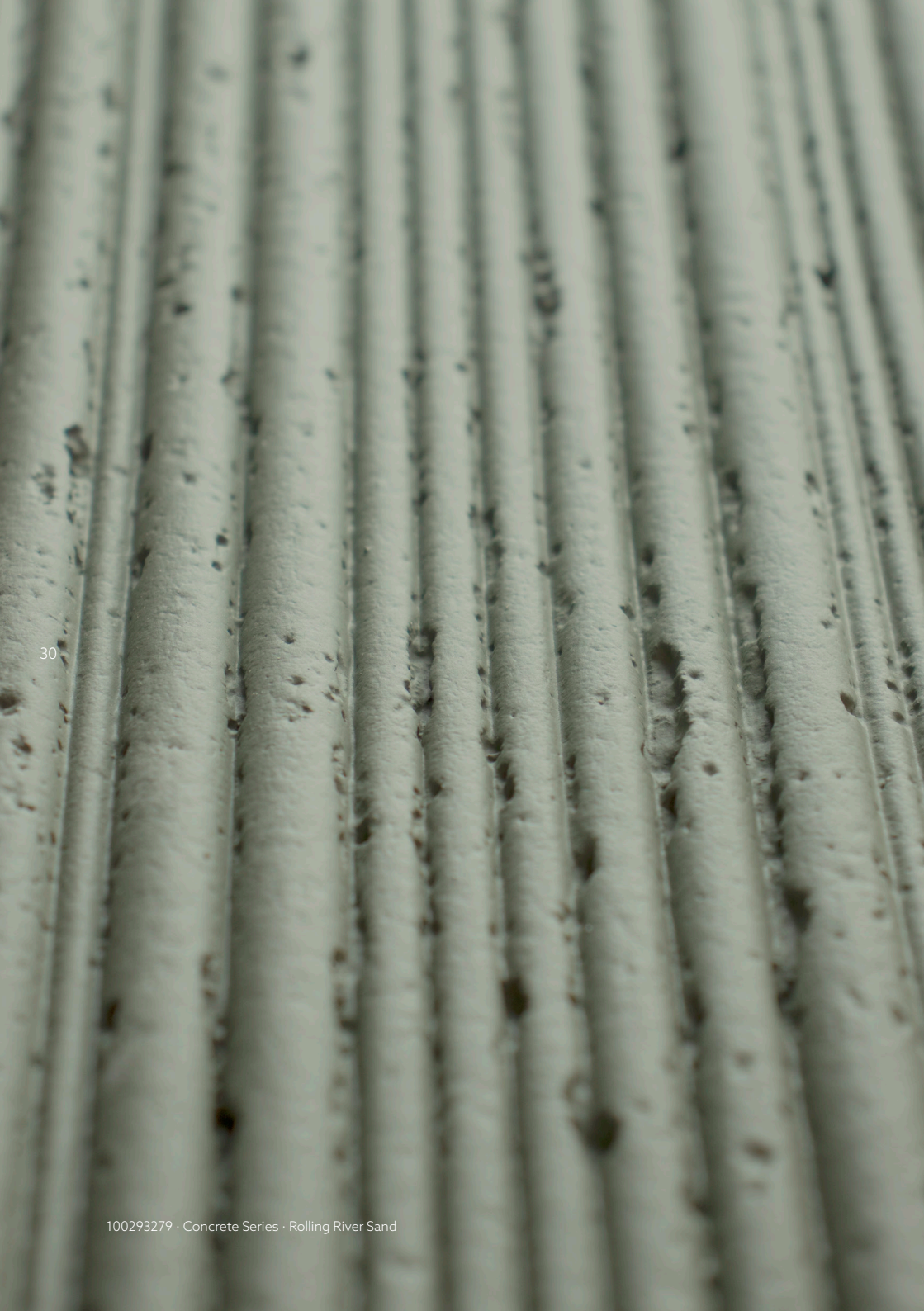


Rolling · Raw White  
100305786

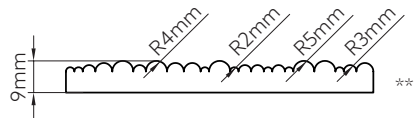
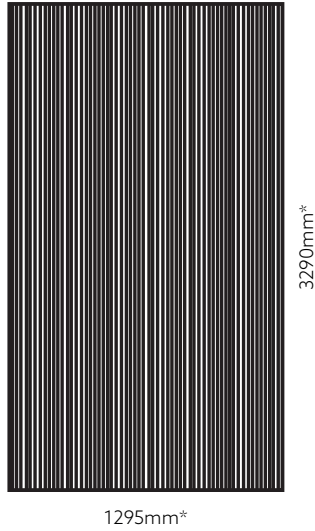








## Group A



(\*) Approximate measurements. Nominal measurement tolerances are  $\pm 20\text{mm}$  on the long side and  $\pm 10\text{mm}$  on the short side. (\*\*) Approximate measurements. Design height tolerance  $\pm 5\text{mm}$ .



# mattonella

Taking traditional aesthetics as an inspiration, we have designed Mattonella, a panel with an appearance similar to fired clay which offers a unique decorative potential. Mattonella is a combination of tradition and modernity, giving spaces a creative and timeless atmosphere.

Design created by Estudi[H]ac.







**Mattonella · White Clay**  
100293343



**Mattonella · Paglierino**  
100293391



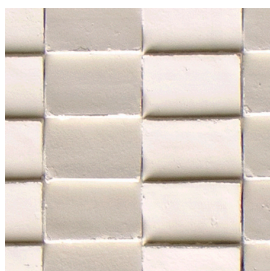
**Mattonella · Bruciato**  
100293338




**Mattonella · Rosato**  
100293372



**Mattonella · Anticato**  
100293392



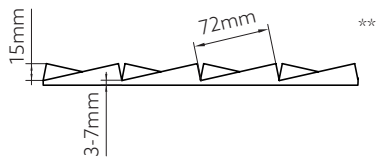
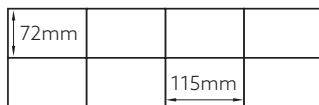
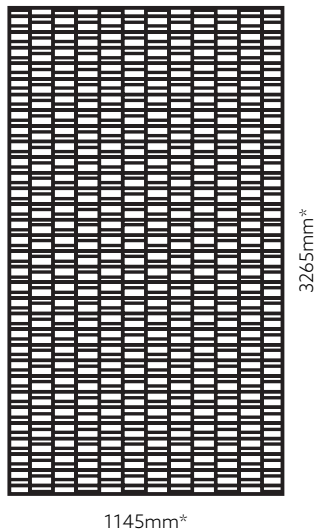
 **Mattonella · Raw White**  
100305762







## Group A



(\*) Approximate measurements. Nominal measurement tolerances are  $\pm 20\text{mm}$  on the long side and  $\pm 10\text{mm}$  on the short side. (\*\*) Approximate measurements. Design height tolerance  $\pm 5\text{mm}$ .



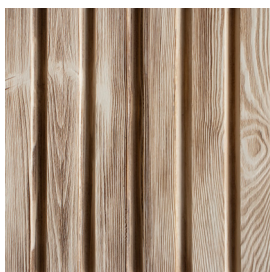
# doghe

With a similar appearance to natural wood, Doghe is noble and sophisticated, a decorative panel which conveys elegance. It offers spaces the warmth and comfort of natural wood, being an excellent option for places of relaxation.

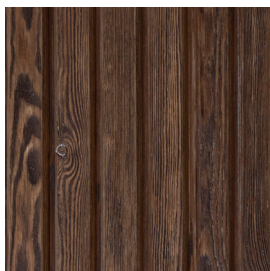
Design created by Estudi{H}ac.



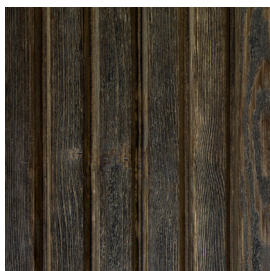




Doghe · Roble Natura  
100293376



Doghe · Nogal Americano  
100293375



Doghe · Roble Murano  
100293395

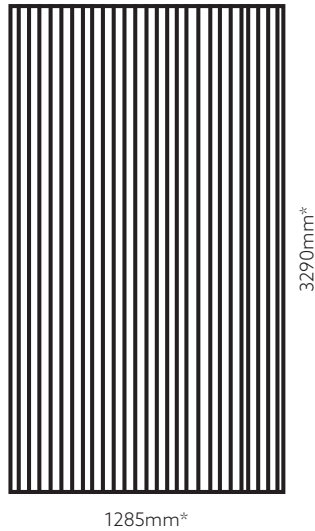




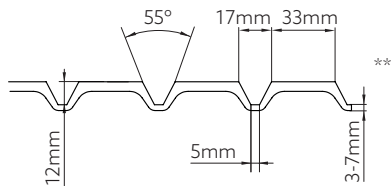




# Group C



43



(\*) Approximate measurements. Nominal measurement tolerances are  $\pm 20\text{mm}$  on the long side and  $\pm 10\text{mm}$  on the short side. (\*\*) Approximate measurements. Design height tolerance  $\pm 5\text{mm}$ .



# willow

Delicacy and strength give value to this model and place it at the vanguard of design. Willow emits peaceful sensations for creating welcoming environments. Excellent for use in spaces where a fresh, delicate atmosphere is sought.

Design created by Estudi{H}ac

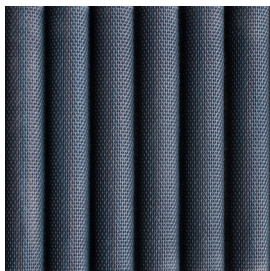




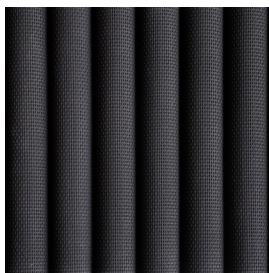
45



Willow · Velvet Green  
100293347



Willow · Velvet Blue  
100293413



Willow · Velvet Black  
100293422

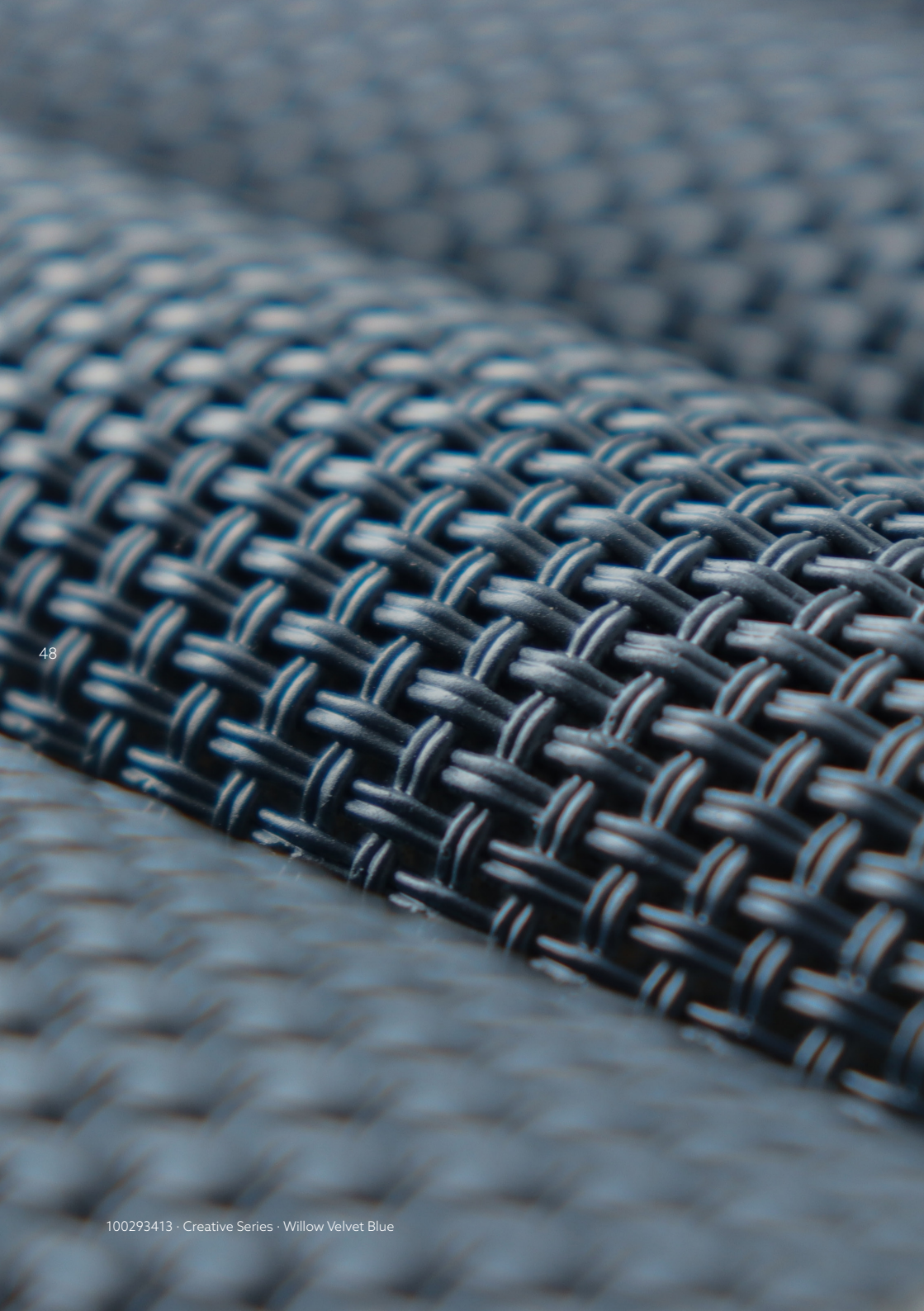


Willow · Raw White  
100305764

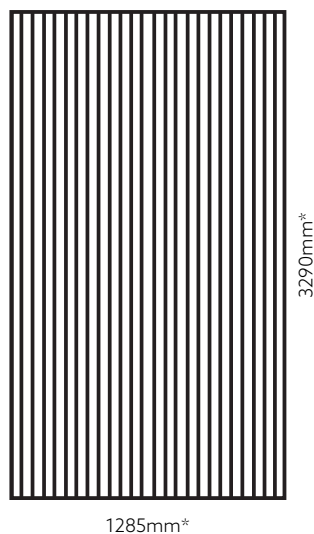




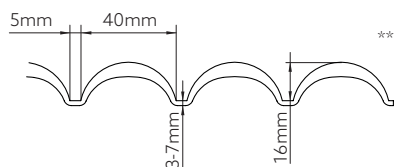




## Group B



49



(\*) Approximate measurements. Nominal measurement tolerances are  $\pm 20\text{mm}$  on the long side and  $\pm 10\text{mm}$  on the short side. (\*\*) Approximate measurements. Design height tolerance  $\pm 5\text{mm}$ .





# palm

Passion for details has led us to design Palm, a piece with a braided appearance which gives volume to decoration. The application of Palm changes the aesthetic and personality of any space with extraordinary ease.

Design created by Estudi(H)ac.

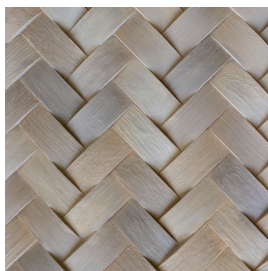




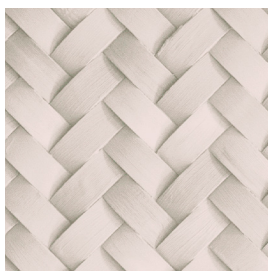




**Palm · Mediterranean**  
100293415



**Palm · Caribbean**  
100293414



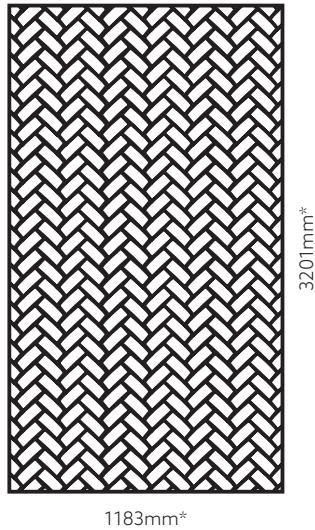
**Palm · Raw White**  
100305785



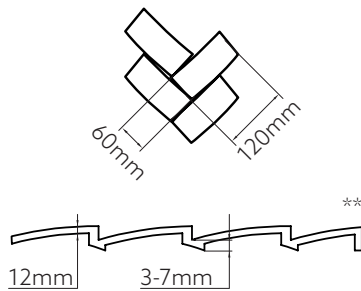




## Group B



55



(\*) Approximate measurements. Nominal measurement tolerances are  $\pm 20\text{mm}$  on the long side and  $\pm 10\text{mm}$  on the short side. (\*\*) Approximate measurements. Design height tolerance  $\pm 5\text{mm}$ .



# shades

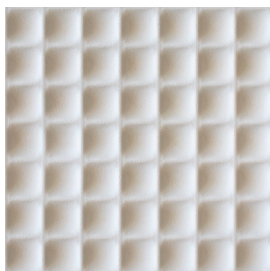
Contemporary and sophisticated, Shades is a commitment to conveying sensations and lingering in the mind. Using Shades to decorate spaces is perfect if seeking to create distinctive atmospheres which linger people's minds.

Design created by Estudi{H}ac.

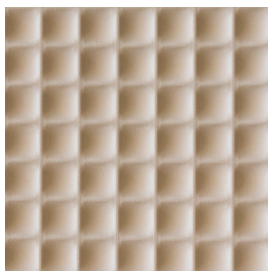




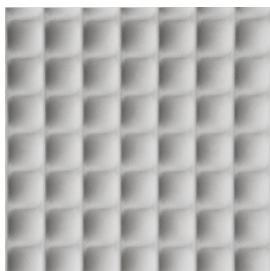




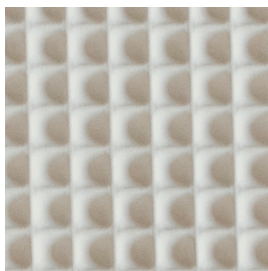
Shades · White Sand  
100293423



Shades · Vanilla Sand  
100293416



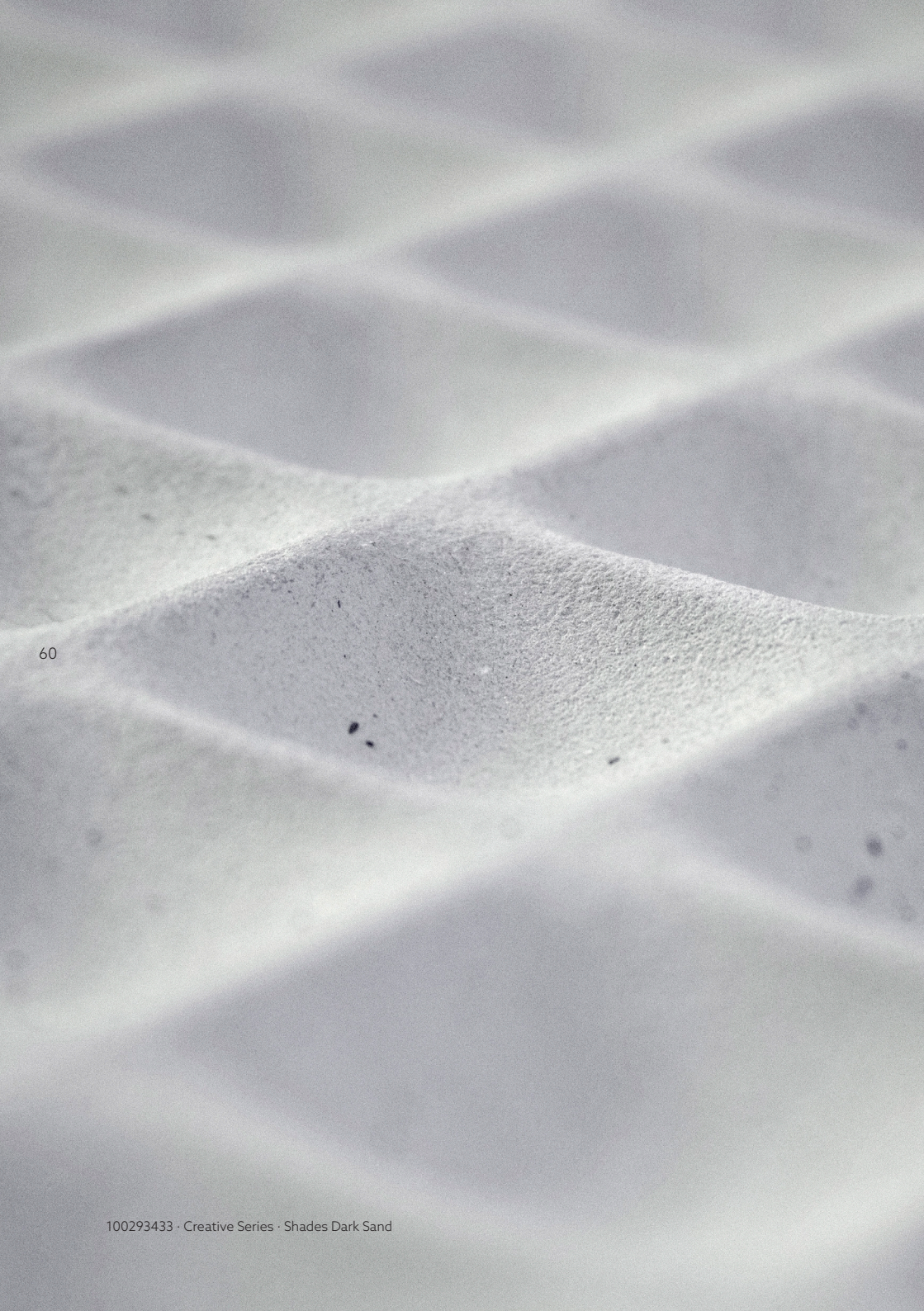
Shades · Dark Sand  
100293433



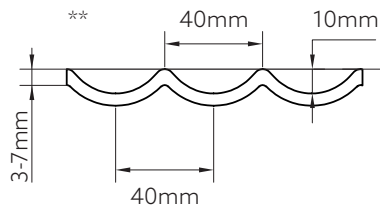
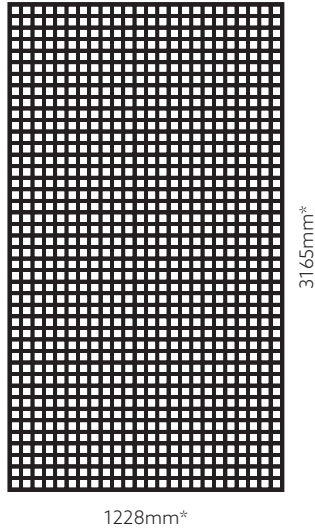
Shades · Raw White  
100305759







## Group B



(\*) Approximate measurements. Nominal measurement tolerances are  $\pm 20\text{mm}$  on the long side and  $\pm 10\text{mm}$  on the short side. (\*\*) Approximate measurements. Design height tolerance  $\pm 5\text{mm}$ .





# OZ

Different textures make up Oz, a striking combination which is notable for its originality and ability to transform any space. It is the perfect decorative panel for premises seeking to project a modern image, such as restaurants or cocktail bars.

Design created by Estudi[ll]ac.









Oz · White Clay  
100293424



Oz · Mediterranean  
100293434



Oz · Red Clay  
100293435



Oz · Yellow Clay  
100293444



Oz · Velvet Brown  
100293441



Oz · Raw White  
100305784

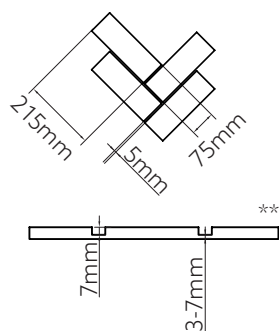
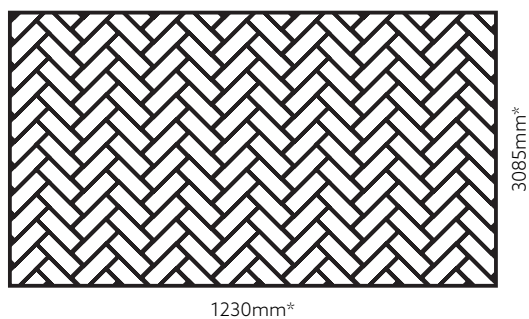








## Group A



(\*) Approximate measurements. Nominal measurement tolerances are  $\pm 20\text{mm}$  on the long side and  $\pm 10\text{mm}$  on the short side. (\*\*) Approximate measurements. Design height tolerance  $\pm 5\text{mm}$ .



# codes

68

PANELS	GROUP	SAP CODE
--------	-------	----------

## Concrete Series

WAVE. White Sand	B	100287549
WAVE. Ocre Sand	B	100293371
WAVE. Grey Sand	B	100293337

ARCO. White Sand	B	100293356
ARCO. Ocre Sand	B	100293299
ARCO. Grey Sand	B	100293381

ROLLING. White Sand	A	100293357
ROLLING. River Sand	A	100293279
ROLLING. Ocre Sand	A	100293333
ROLLING. Velvet Black	A	100293370

## Cotto Series

MATTONELLA. Paglierino	A	100293391
MATTONELLA. Rosato	A	100293372
MATTONELLA. Anticato	A	100293392
MATTONELLA. Bruciato	A	100293338
MATTONELLA. White Clay	A	100293343

## Wood Series

DOGHE. Nogal Americano	C	100293375
DOGHE. Roble Murano	C	100293395
DOGHE. Roble Natura	C	100293376

PANELS	GROUP	SAP CODE
--------	-------	----------

## Creative Series

WILLOW. Velvet Black	C	100293422
WILLOW. Velvet Blue	C	100293413
WILLOW. Velvet Green	C	100293347

PALM. Caribbean	C	100293414
PALM. Mediterranean	C	100293415

SHADES. White Sand	B	100293423
SHADES. Dark Sand	B	100293433
SHADES. Vanilla Sand	B	100293416

OZ. Red Clay	A	100293435
OZ. Yellow Clay	A	100293444
OZ. White Clay	A	100293424
OZ. Mediterranean	A	100293434
OZ. Velvet Brown	A	100293441

WAVE. Raw White	B	100305790
ARCO. Raw White	B	100305763
ROLLING. Raw White	A	100305786
MATTONELLA. Raw White	A	100305762
WILLOW. Raw White	C	100305764
PALM. Raw White	C	100305785
SHADES. Raw White	B	100305759
OZ. Raw White	A	100305784

PUTTY	SAP CODE
Fitmastic Fine 0,25kg	100294251
Fitmastic Fine 0,5kg	100294225
Fitmastic Fine 2kg	100294185
Fitmastic Fine 5kg	100294252
Fitmastic Rough 0,25kg	100294179
Fitmastic Rough 0,5kg	100294214
Fitmastic Rough 2kg	100294215
Fitmastic Rough 5kg	100287852

PAINT	SAP CODE
FW P001 100ml	100294247
FW P003 100ml	100294264
FW P004 100ml	100294290
FW P005 100ml	100294291
FW P007 100ml	100294265
FW P008 100ml	100294282
FW P009 100ml	100294273
FW P010 100ml	100294234
FW P011 100ml	100294219
FW P013 100ml	100294235
FW P014 100ml	100294228
FW P015 100ml	100294236
FW P016 100ml	100294248
FW P017 100ml	100294270
FW P018 100ml	100294271
FW P022 100ml	100294261
FW P025 100ml	100287862
FW P026 100ml	100294254
FW P027 100ml	100294263
FW P028 100ml	100294280
FW P029 100ml	100304388
FW T019 100ml	100294272
FW T020 100ml	100294237
FW T021 100ml	100294281

PUTTY	SAP CODE
Aquafitmastic Rough 0,25kg	100294186
Aquafitmastic Rough 0,5kg	100294187
Aquafitmastic Rough 2kg	100294188
Aquafitmastic Rough 5kg	100294189

FW Hardener 15ml	100294162
FW Hardener 75ml	100287860

PAINT	SAP CODE
FW P001 300ml	100287838
FW P003 300ml	100294302
FW P004 300ml	100294331
FW P005 300ml	100294326
FW P007 300ml	100294314
FW P008 300ml	100294327
FW P009 300ml	100294315
FW P010 300ml	100294342
FW P011 300ml	100294334
FW P013 300ml	100294330
FW P014 300ml	100287817
FW P015 300ml	100294340
FW P016 300ml	100294312
FW P017 300ml	100294322
FW P018 300ml	100294323
FW P022 300ml	100294350
FW P025 300ml	100294400
FW P026 300ml	100294324
FW P027 300ml	100294325
FW P028 300ml	100294352
FW P029 300ml	100304355
FW T019 300ml	100294332
FW T020 300ml	100294333
FW T021 300ml	100294353



# faq's



## What is Fitwall® used for?

Covering:



Ceilings



Walls



Units

## Where can it be installed?



Interior

## On what type of support can it be installed?



Plasterboard



Brick



Wood

70

## Does the support where the panel will be installed have to be prepared in any way?

The substrate must not be treated with any product. It must be ensured that the wall is flat, as it may be irregular.

## Is it necessary to carry out works for the installation of this type of panel?

It is not necessary to carry out works due to installation being with mechanical fixings, that is, screws and blocks, depending on the substrate, and installing on an existing substrate.

## Does installation take a long time?

Due to the size of the panels, a larger area is covered in a shorter time, therefore making the installation time relatively short. Full renovations may be carried out in a much shorter time than with other materials existing on the market.



**Can it be curved?**

It must be known that the panel adapts to the substrate where it will be installed. It is therefore possible to create curves, always taking into account the curve radii specified in the installation datasheets of each panel.

**Does cleaning require any special product?**

No, scrubbers and fabric cloths must be avoided, as they are rough materials which damage the surface of the material. We paper is used to eliminate the excess, a little soap, and a cloth to clean and dry the surface.





PORCELANOSA Grupo

Ctra. Vila-real-Puebla de Arenoso (CV20) Km 1 · 12540 VILA-REAL (CASTELLÓN) SPAIN  
PO/BOX. 372 - Tel: (+34) 964 50 64 64 Fax. (+34) 964 50 64 81  
[krion@krion.com](mailto:krion@krion.com) / [www.krion.com](http://www.krion.com)

**Legal Notice:** The images, texts and data are owned by KRION SOLID SURFACE, S.A.U., with registered office at Carretera Vila-real – Puebla de Arenoso (CV-20), 12.540 Vila-real (Castellón). Its express, written consent is required for the use and dissemination, whether partial or full, of this content. KRION SOLID SURFACE, S.A.U. has exclusive usage rights over it in any form, and in particular the rights of reproduction, distribution, public communication and transformation. All this material is protected by intellectual property legislation and its misuse may be subject to penalty including criminal penalty.







Ctra. Vila-real-Puebla de Arenoso (CV20) Km 1 · 12540 VILA-REAL (CASTELLÓN) SPAIN  
PO/BOX. 372 · Tel: (+34) 964 50 64 64 Fax: (+34) 964 50 64 81  
[krion@krion.com](mailto:krion@krion.com) / [www.krion.com](http://www.krion.com)