

PORCELANOSA Grupo

Infinity shower areas

The best solution for each bathroom

butech
PORCELANOSA Grupo

Thinking ceramics

PORCELANOSA is one of the world's leading references in bathroom design, both for its ceramic collections and bathroom accessories. PORCELANOSA ceramic tiles, manufactured to the highest quality standards, are synonymous with design and good taste. That is why they are increasingly used in all types of environments, such as shower trays.

BUTECH has a wide range of shower trays that can be tiled directly with PORCELANOSA ceramics. In addition to the bathroom floor, ceramic tiles can also be used for the shower tray, allowing a wide variety of designs and facilitating accessibility. Discover the different possibilities that BUTECH offers to turn your bathroom into an unforgettable experience.

Index

6	shower deck n
14	shower line
20	eco linear grate Kit
27	imperband Kit
34	Linear gratings for imperband kit
39	Square gratings for imperband kit
46	Drains for showers and terraces
56	Additional materials
58	References



shower deck n

New shower tray concept with concealed drain for the most exclusive bathrooms. This new shower tray system creates a seamless effect with the rest of the bathroom floor thanks to the fact that the slopes are hidden under the floor. Drainage is achieved through open joints and does not require the installation of an evacuation grid.

The **shower deck n system** is the premium option that best integrates the shower tray into the bathrooms by using the same ceramic tile, remaining at the same level as the floor and hiding the water collection system from view.

shower deck n

TECHNICAL INFORMATION

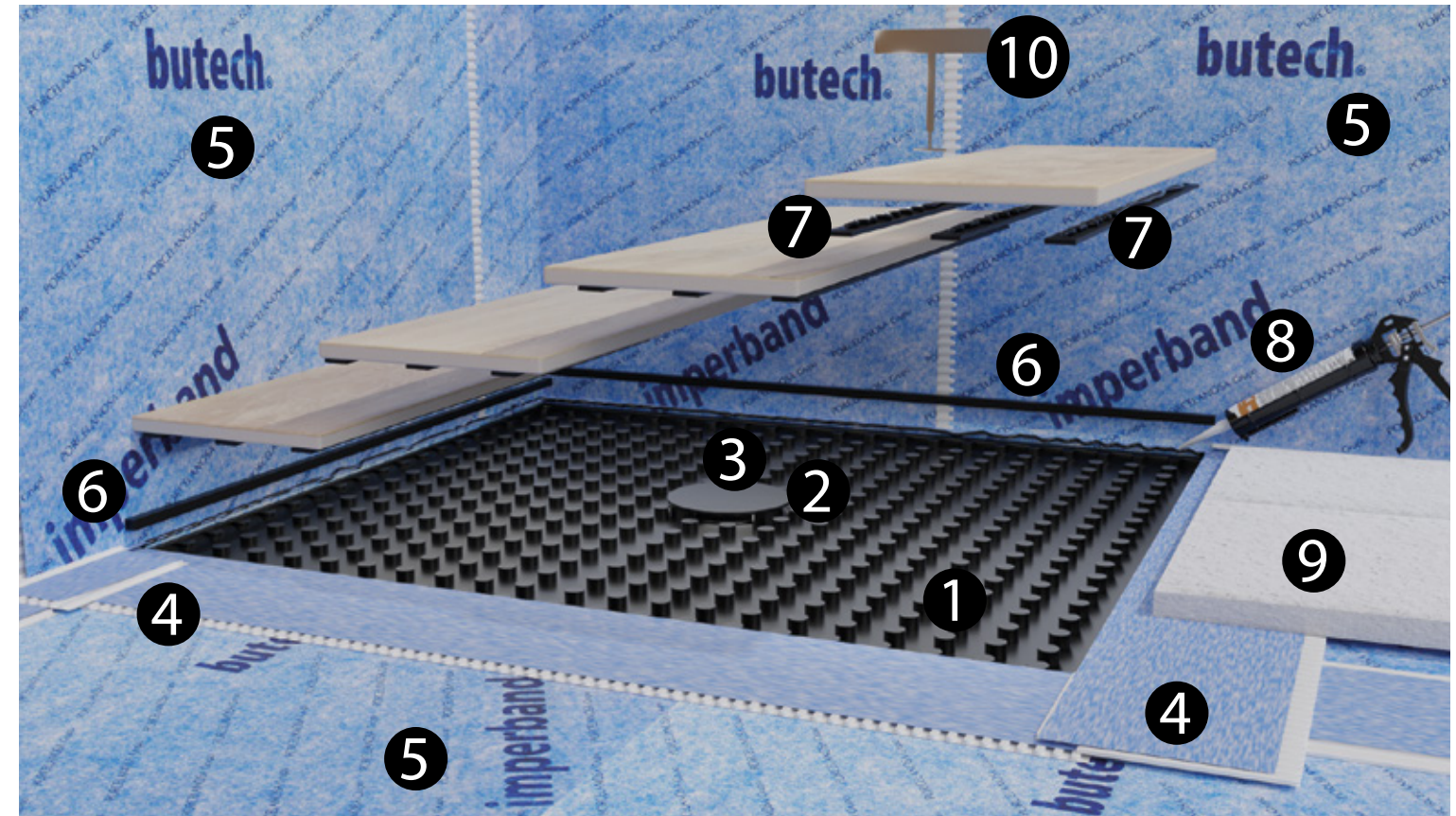
Main characteristics

- Flat shower tray without slopes.
- Compatible with porcelain floor planks of a thickness equal to or greater than 6mm. Non-slip tile finish recommended.
- Polyurethane coated with thermostable polymers.
- Concealed drainage sink.
- Ultra-thin shower tray; only 30 mm high.
- Easy to clean and highly resistant to household detergents.
- Virtually no maintenance, especially when compared to wooden decking.
- Thermal insulation.

Recommended use

- Shower trays and cabins in every type of bathrooms.
- Shower trays for private and public use.
- Bathrooms adapted for people with reduced mobility.
- Bathrooms for the disabled.

shower-deck SHOWER TRAY COMPONENTS



1. Shower deck n tray. Thickness: 30mm
2. Horizontal non-return siphonic drain. Height 60mm. Outlet Ø 40mm and 0.52 l/s.
3. Drain reinforcement.
4. lamiband 200 roll. 5 linear meters (1 u)
5. imperband roll. 5 meters² (1 u)
6. PVC LEVELING profiles 14X14X2 units Long + 1 unit Wide of the tray (Max. 2000 mm) (3 units).
7. UNION profiles for ceramic tiles 30x4xLong of the tray, max. 2000 mm (units vary according to width of chosen ceramics)
8. Two P-404 tubes
9. Protection plate
10. Manhole key
11. Instructions

shower-deck
BATHROOM DESIGN
WITHOUT LIMITS





shower line

Waterproofing and drainage system for custom shower trays with wall drainage where water is evacuated through the open joint between flooring and tile covering. This system is characterized by maximally concealing the shower drainage system, while ensuring perfect waterproofing of walls and floors without interrupting the visual continuity of the tile covering.

shower line

TECHNICAL INFORMATION

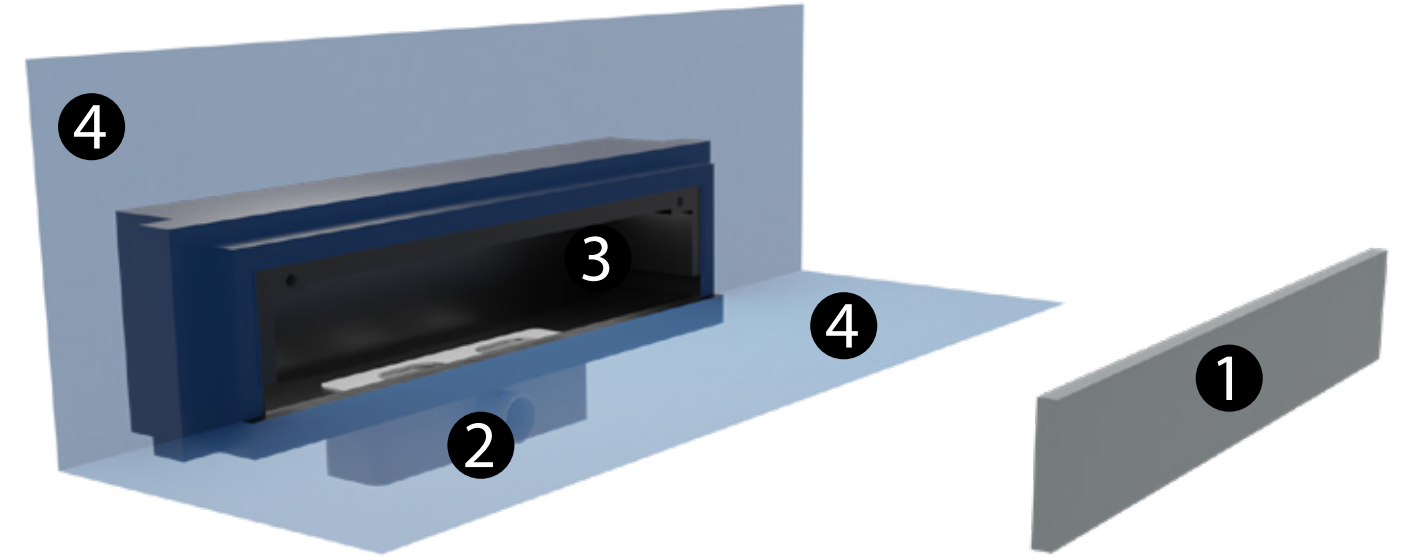
Main Features

- Drainage chamber made of polyurethane coated with fungicidal and antibacterial thermosetting polymers.
- Perimeter waterproof sheet compatible with the direct placement of ceramic tiles.
- Drainage sump hidden from view.
- Maximum safety, eliminates risks of water leakage between the waterproof sheet and the drain.
- Drainage joint only 8mm wide.
- Easy cleaning and high resistance to household detergents.

Recommended Applications

- Shower trays and cabins in all types of bathrooms.
- Residential use shower trays.
- Bathrooms adapted for people with reduced mobility.
- Bathrooms for disabled persons.

shower line SHOWER DRAIN COMPONENTS



1. Tilable decorative grid. Anchored to the drainage chamber with stainless steel tabs.
2. Siphonic drain, convertible to non-siphonic, with a discharge rate of 28.6 l/min and a 40 mm outlet.
3. Recessed drainage chamber.
4. **imperband** sheet thermosealed to the recessed drainage chamber.



eco linear grate kit

System for waterproofing shower trays including drain, connecting piece with the shower tray waterproofing and linear grating.

Ideal for shower trays where a minimum width grating is required, only 52mm, or where the grating is to be attached to the wall at the bottom of the shower.

eco linear grate kit

TECHNICAL INFORMATION

Main features

- Drain and linear grate kit model 60 cm, 80 cm, 120 cm, 150 cm or 180 cm long by 5.2 cm wide. Grate included.
- Shower wall-adjoining grid
- Siphonic drain (convertible into non-siphonic) for built-in showers with 50 mm horizontal outlet and reduction to 40 mm.
- Includes 25 cm x 25 cm imperband eco sheet heat-sealed to the cover. Guarantees total watertightness at the most critical point.
- Safe and easy maintenance system.
- Easy and fast installation.

Recommended use

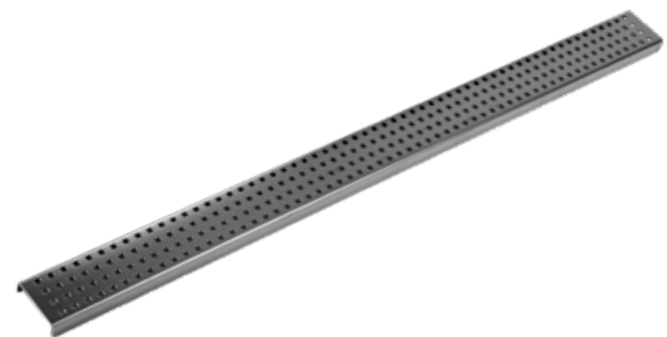
- Shower trays with linear grating attached to the wall.
- Shower trays with linear grating only 52mm wide.
- New construction and renovation projects.
- Residential use.



texture-revestible



chrome



square



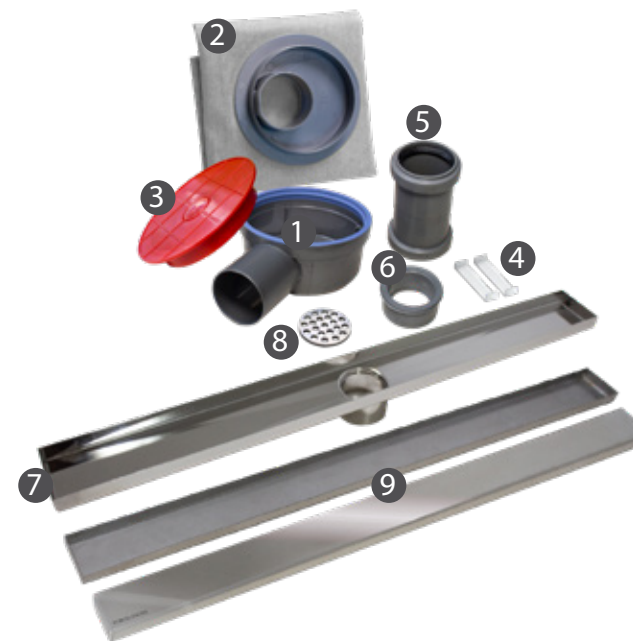
matt black



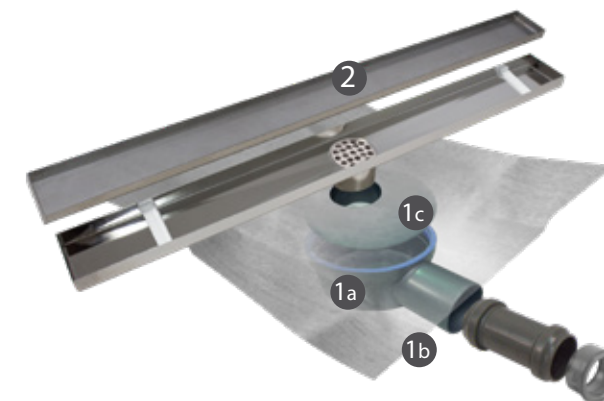
line n



Available sizes



1. Drain
2. **imperband eco** sheet heat-sealed to the sink cover
3. Protective cover
4. Grating supports
5. Adapter
6. 50/40 reducer
7. Canal
8. Filter
9. Stainless steel grating.



* The **eco linear gratings kit** includes a drain (1a) with siphon (1b) and a waterproof sheet mounted on the union disc (1c).

* Grating(2). There are 5 models. Check for models and sizes available.



imperband kit

Shower tray waterproofing system consisting of an extra-thin drain, connected by means of a ring to a waterproof sheet. Specially recommended for waterproofing shower trays in refurbishing jobs. This system is compatible with a wide range of steel gratings, both square and linear.

The system formed by the **imperband n refurbishing kit** and steel gratings is the best technical solution for bathroom renovations that include a shower tray. Excellent system that eliminates architectural barriers in a simple way and avoids the risk of dampness and water leaks.

imperband kit

TECHNICAL INFORMATION

Main features

Waterproof sheet:

- Double thermoplastic polyolefin membrane covered on both sides by non woven polyester fibers which allows to be fixed with type C2 cement-based adhesives, as per EN12004
- It incorporates a disc for attachment to the drain to ease installation and the formation of slopes. Maximum security, it eliminates leakage risks between waterproof sheet and drain piece.
- Dimensions: 150 x 225 cm
- Grate not included

imperband refurbishing kit:

- Very compact system with a height of only 65 mm that allows installations of only 7.5 cm from the support to the ceramic tile.
- 50 mm diameter horizontal outlet.
- Discharge speed. 0.5 l/s.
- Includes u-bend.

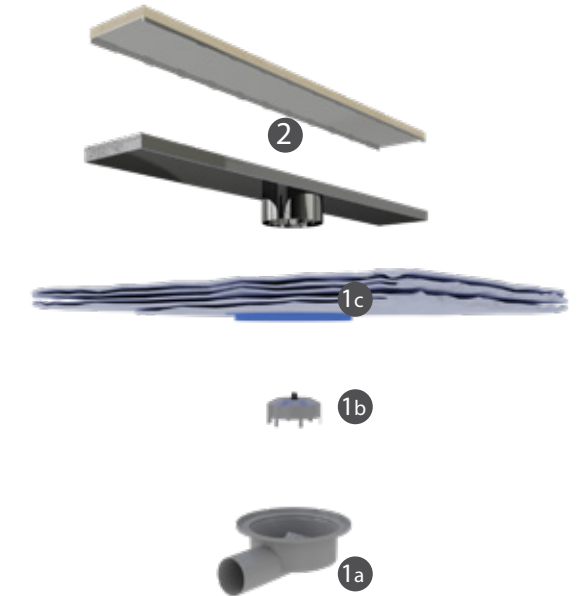
Recommended use

- Shower trays with 80mm wide linear grating.
- New construction and, especially, renovation projects.
- Residential use.

kit imperband SHOWER TRAY COMPONENTS



1. Siphonic drain
2. **ceramic grating with frame**
3. **Imperband** waterproof sheet
4. type C2, S1 adhesive as per EN 12004. We recommend **one-flex premium**
5. screed
6. **Pro-shower** profile
7. wall tile shower tray
8. base
9. **epotech aqua** grouting material



* The **imperband n refurbishing kit** includes a drain (1a) with siphon (1b) and a waterproof sheet mounted on the union disc (1c).

* Grating(2) to be ordered separately. Check for models and sizes available.

* **pro-shower** profile to be ordered separately. There are two **pro-shower** profiles (wall and floor)



Linear gratings for imperband kit

Hidden drain that receives the water through the slopes, and evacuates it through the joints surrounding the grating, until it reaches the drainage channel and the drain.

A new concept of invisible drainage, convenient in its use and with distinguished aesthetics.

Linear gratings for imperband kit

TECHNICAL INFO

Main features

- Linear grate model 59,6 cm, 80 cm, 120 cm long by 9,3 cm wide.
- Electropolished AISI 304 stainless steel channel with matte finish.
- AISI 304 chrome-plated stainless steel grating, with different finishes.
- Safe and easy maintenance system.
- Easy and fast installation.

Recommended use

- Shower trays with linear grating glued to the wall
- Shower trays with linear grating only 52mm wide
- New construction and renovation projects.
- Residential use.



black



texture chrome



texture



squared



line



cerámica



Square gratings for imperband kit

Perfect for a unique look and a touch with the floor without contrasts. It receives the water through the four slopes, and evacuates it through the joints surrounding the grating, until it reaches the drainage channel and. A point drain with four slopes, which allows you to create a renewed air in your shower.

Square gratings for imperband kit

TECHNICAL INFO

Main features

- Square gratings with 10 x 10 cm metal frame
- AISI 304L stainless steel grating.
- Different finishes and white polypropylene elevator.
- Safe and easy maintenance system.
- Easy and fast installation.

Recommended use

- Four-slope shower trays with square gratings.
- New construction and renovation projects.
- Residential use.



standard n squared



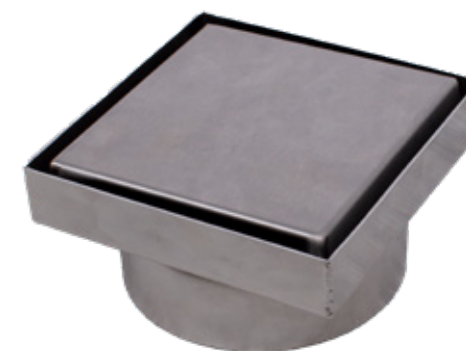
square chrome



sun



square texture-revestible



square texture-revestible



Drains for showers and terraces

Drains for waterproofing sheets installed under ceramic floors. They feature a wide dish around the grating, which ease the connection to waterproof sheets. The connecting piece between the grating and the 10 cm drain, can be cut according to the thickness of the chosen flooring. It includes the steel grating but not the O-ring between the drain and the waterproofing, which is ordered separately. Specially recommended for terraces and shower trays with ceramic tiles and natural stones.

Drains for showers and terraces

TECHNICAL INFO

Drain for showers

- 75 mm (horizontal drain) or 140 mm (vertical drain) high drain.
- Discharge speed. 0.6 l/s (horizontal drain) or 0.9 l/s (vertical drain).
- Crown for fixing imperband of 22cm (horizontal drain) or 26.5 cm (vertical drain) in diameter.
- Optional outlet for serial connections (horizontal outlet).
- 50 mm outlet.
- Includes u-bend.
- 10 x 10 cm steel grating.

Drain for terraces

- 190 mm high drain.
- Discharge speed. 1.6 l/s.
- 75/110 mm vertical outlet.
- 36 cm diameter fixation crown for **lamitech n** waterproofing sheet.
- Includes u-bend.
- 143 x 143 mm steel grating.



40 x 50 cm horizontal shower drain



50 cm vertical shower drain



drain shower connection



75 x 110 cm vertical terrace drain



terrace drain connection

additional materials epotech aqua / epotech nature



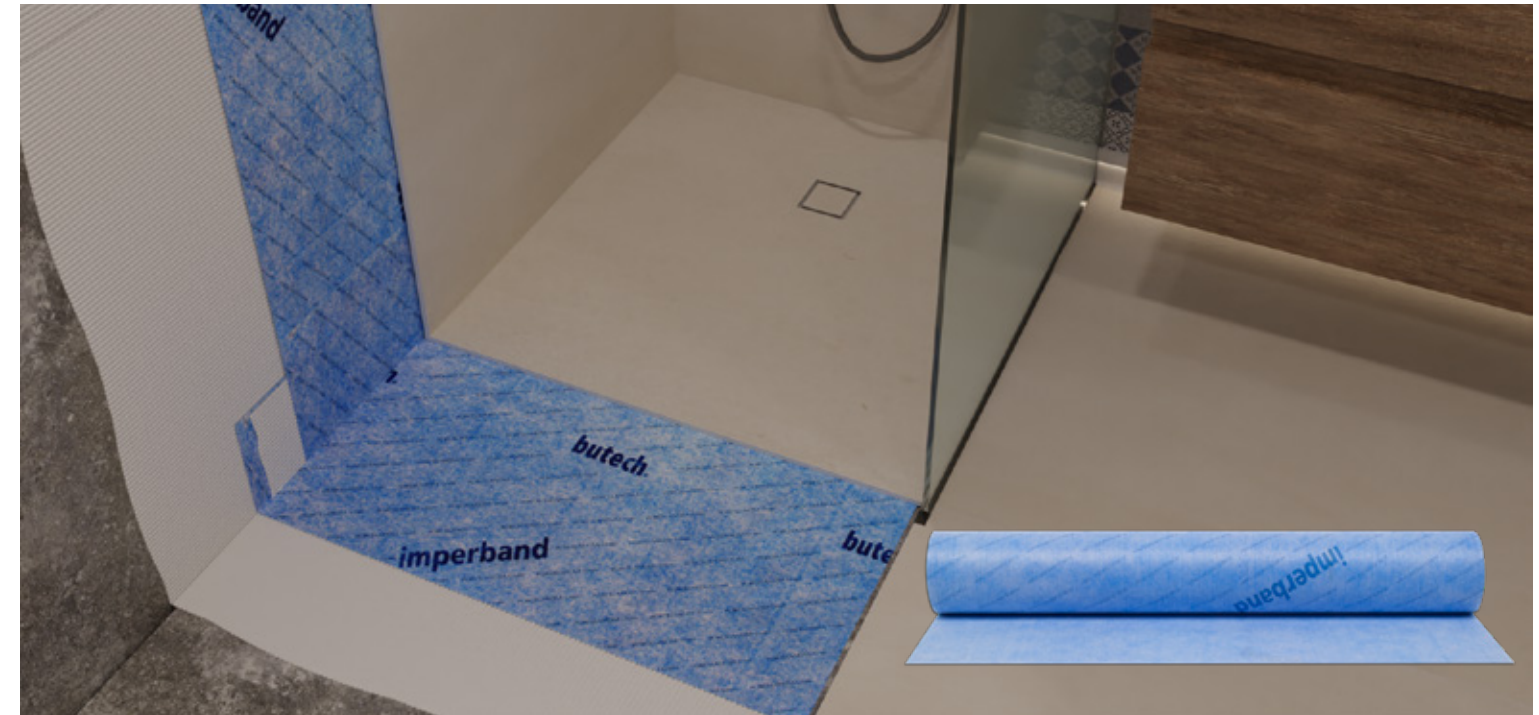
Features:

- Two-component colored epoxy putty.
- Easy to apply and clean. This product is free of organic solvents and plasticizers.
- Excellent joint color stability.
- Resistance to most chemicals and alkali, even in high concentrations.
- Wide color range.

Applications:

- Tile joints with uniform color and shade, resistant to the passing of time.
- Shower trays and permanently damp environments.
- High traffic floor coverings.
- Floorings with built-in heating.
- Pools.

additional materials imperband



Features:

- Double thermoplastic polyolefin membrane covered on both sides by non woven polyester fibers.
- Maximum waterproofing with minimal thickness (0.5 mm).
- Compatible with C2 adhesives as per EN 12004.
- **imperband eco** sheet includes 70% recycled material.
- Good chemical resistance.
- Quick and easy application.

Applications:

- Waterproofing of interior walls and floors.
- Shower trays and cabins in every type of bathrooms.
- Changing rooms, public toilets and showers.
- Spas and premises in permanently damp environments.
- Balconies and terraces of less than 10 sqm surface area

additional materials pro-shower



Features:

- Stainless steel profiles with variable height to adapt to the shower tray slopes.
- Available for both wall and floor mounted side rails
- Available in two finishes: chrome-plated and brushed
- Available in two lengths: 98 cm and 148 cm
- They have a fixing flange that makes them easy to install with ceramic tiles or mosaics.

Applications:

- Conceals the sides of shower trays with mosaic or ceramic tiles
- Protects the sides of shower trays and hinders water seepage



References

shower deck n

SAP	Description	Presentation
100350281	Shower tray 700 x 700 x 30 mm	1 unit/box
100350335	Shower tray 800 x 800 x 30 mm	1 unit/box
100350336	Shower tray 800 x 938 x 30 mm	1 unit/box
100350337	Shower tray 900 x 938 x 30 mm	1 unit/box
100350338	Shower tray 1216 x 938 x 30 mm	1 unit/box
100349341	Customized shower tray*	1 unit/box

* Maximum shower tray dimensions 1.300 x 2.000 x 30 mm

shower line

SAP	Description	Presentation
100347764	40 cm x 15.5 cm x 11.3 cm	1 unit/box
100347762	60 cm x 15.5 cm x 11.3 cm	1 unit/box

imperband / imperband eco

SAP	Description	Presentation
100276193	Roll of 30 m²	1 unit/box
100276212	Roll of 5 m²	1 unit/box
100337140	imperband eco - Roll of 30 m²	1 unit/box
100337121	imperband eco - Roll of 5 m²	1 unit/box

eco linear grate kit

SAP	Description	Presentation
100338557	Texture - Recestible 60 x 6 cm	1 unit/box
100338558	Texture - Recestible 80 x 6 cm	1 unit/box
100333806	Texture - Recestible 120 x 6 cm	1 unit/box
100333807	Texture - Recestible 150 x 6 cm	1 unit/box
100333778	Texture - Recestible 180 x 6 cm	1 unit/box
100338199	Chrome 60 x 6 cm	1 unit/box
100338220	Chrome 80 x 6 cm	1 unit/box
100338224	Chrome 120 x 6 cm	1 unit/box
100338184	Line n 60 x 6 cm	1 unit/box
100338214	Line n 80 x 6 cm	1 unit/box
100338216	Line n 120 x 6 cm	1 unit/box
100338186	Square 60 x 6 cm	1 unit/box
100338223	Square 80 x 6 cm	1 unit/box
100338189	Square 120 x 6 cm	1 unit/box
100338185	Matt Black 60 x 6 cm	1 unit/box
100338221	Matt Black 80 x 6 cm	1 unit/box
100338188	Matt Black 120 x 6 cm	1 unit/box

kit imperband

SAP	Description	Presentation
100187047	Kit 150 x 225 cm	1 unit/box

Linear grates

SAP	Description	Presentation
100278946	Black 59,6 x 8 cm	1 unit/box
100103365	Chrome 59,6 x 8 cm	1 unit/box
100103366	Chrome 80 x 8 cm	1 unit/box
100103364	Chrome 120 x 8 cm	1 unit/box
100103368	Texture 59,6 x 8 cm	1 unit/box
100103369	Texture 80 x 8 cm	1 unit/box
100103367	Texture 120 x 8 cm	1 unit/box
100103371	Squared 59,6 x 8 cm	1 unit/box
100103372	Squared 80 x 8 cm	1 unit/box
100103370	Squared 120 x 8 cm	1 unit/box
100103374	Line 59,6 x 8 cm	1 unit/box
100103375	Line 80 x 8 cm	1 unit/box
100103373	Line 120 x 8 cm	1 unit/box
100148593	Ceramic 59,6 x 8 cm	1 unit/box
100148595	Ceramic 80 x 8 cm	1 unit/box
100148594	Ceramic 120 x 8 cm	1 unit/box

Square grates

SAP	Description	Presentation
100148572	Standard Squared 10,7 x 10,7 cm	1 unit/box
100114593	Standard Sun 10,7 x 10,7 cm	1 unit/box
100293010	Square Chrome 10,7 x 10,7 cm	1 unit/box
100344172	Square texture-revestible	1 unit/box

Drains for showers

SAP	Description	Presentation
100005822	Horizontal 40 x 50 cm	1 unit/box
100005823	Vertical 50 cm	v
100005825	Shower drain connection/joint	1 unit/box

Drains for terraces

SAP	Description	Presentation
100005827	Vertical 75 - 110 cm	1 unit/box
100005829	Terrace drain connection/joint	1 unit/box

epotech aqua

SAP	Color		Presentation
100182223	blanco		1,5 Kg./can
100182217	marfil		1,5 Kg./can
100278474	tabaco		1,5 Kg./can
100182222	beige		1,5 Kg./can
100182208	gris		1,5 Kg./can
100278467	manhattan		1,5 Kg./can
100278329	cemento		1,5 Kg./can
100182213	antracita		1,5 Kg./can
100278500	negro		1,5 Kg./can

epotech nature

SAP	Color		Presentation
100177504	ash		1,5 Kg./can
100177514	maple		1,5 Kg./can
100177494	beech		1,5 Kg./can
100204262	honey		1,5 Kg./can
100177484	oak		1,5 Kg./can
100177505	iroko		1,5 Kg./can
100177513	elm		1,5 Kg./can
100177512	doussie		1,5 Kg./can
100177485	wenge		1,5 Kg./can

pro-shower deco

SAP	Description	Presentation
100350836	Black 24 mm	1 unit/box
100160219	Black 32 mm	1 unit/box
100159069	Black 40 mm	1 unit/box

pro-shower floor

SAP	Description	Presentation
100159068	Chrome stainless steel - Left side - 980 mm	1 unit/box
100160219	Chrome stainless steel - Right side - 980 mm	1 unit/box
100159069	Chrome stainless steel - Left side - 1480 mm	1 unit/box
100160280	Chrome stainless steel - Right side - 1480 mm	1 unit/box
100159067	Brushed stainless steel - Left side - 1480 mm	1 unit/box
100160218	Brushed stainless steel - Right side - 1480 mm	1 unit/box

pro-shower wall

SAP	Description	Presentation
100159100	Chrome stainless steel - Left side - 1480 mm	1 unit/box
100160248	Chrome stainless steel - Right side - 1480 mm	1 unit/box
100159088	Brushed stainless steel - Left side - 1480 mm	1 unit/box
100160246	Brushed stainless steel - Right side - 1480 mm	1 unit/box



BY APPOINTMENT TO
H.R.H. THE PRINCE OF WALES
MANUFACTURER AND DISTRIBUTOR
OF CERAMIC TILES AND BUILDING PRODUCTS.
PORCELANOSA GROUP LIMITED

PORCELANOSA Grupo



butech building technology s.a.u.

Carretera Vila-real - Puebla de Arenoso CV-20 Apt./Box 297 12540· Vila-real (Castellón) · Spain
Teléfono: (+34) 964 536 200 · Fax: 964 530 034 (Nacional) · Fax: (+34) 964 530 034 (Internacional)
e-mail: butech@butech.es
www.butech.net